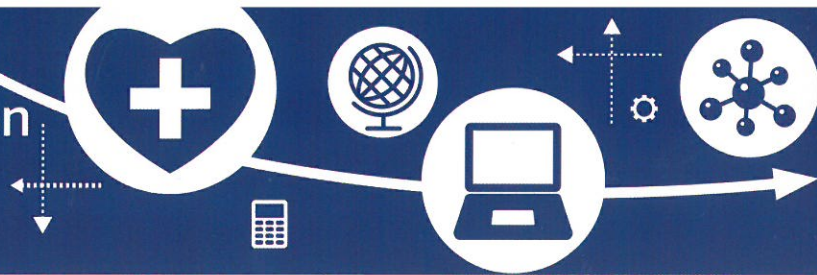


2017-18 Registration/Tuition



St. Mary's School, as an important part of this parish's ministry, receives the spiritual and financial support of the entire parish. Each enrolled student benefits from a portion of the educational cost being paid by St. Mary's parish. We welcome families from parishes without their own schools as members of this learning community. Those families who are active, registered members of a Diocese of Peoria parish [as evidenced by attendance at Mass and sharing of talent and treasure through regular financial support of the parish according to individual means] qualify for an additional subsidy provided by their home parish to St. Mary's School. This entitles those qualifying families to the "Parish Rate" (shown below)-the same rate that is charged to St. Mary's parish families.* We also welcome families who are not active Diocesan parish members at a higher, less subsidized "Non-Catholic Rate". Tuition rates for the 2017-2018 school year appear below.

*Parish rate applied upon approval by family's parish pastor

Kindergarten through 8th Grade

Parish Rate	Annual	Semi-Annual	9 Month
1 Child	\$3,939	\$1,969.50	\$438
2 Children	\$5,238	\$2,619	\$582
3+ Children	\$6,467	\$3,233.50	\$719

Non-Parish Rate	Annual	Semi-Annual	9 Month
1 Child	\$5,424	\$2,712	\$603
2 Children	\$6,803	\$3,401.50	\$756
3+ Children	\$8,103	\$4,051.50	\$900

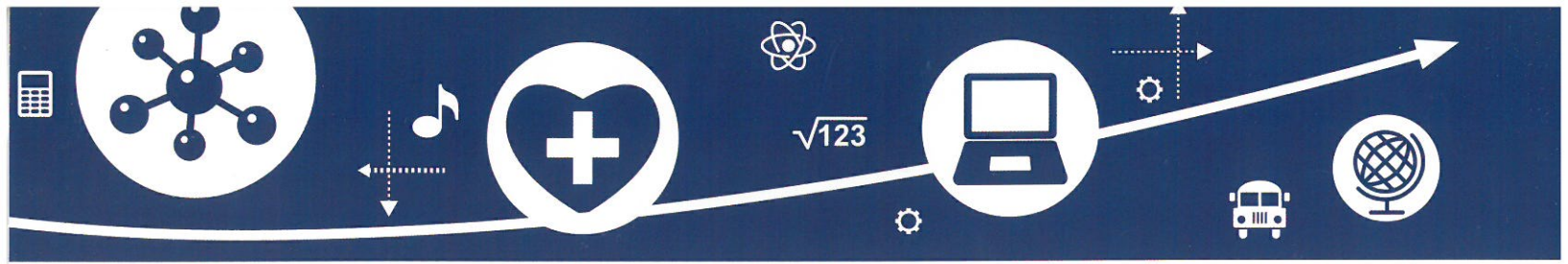
Non-Catholic Rate	Annual	Semi-Annual	9 Month
1 Child	\$6,303	\$3,151.50	\$700
2 Children	\$11,976	\$5,988	\$1,331
3+ Children	\$17,648	\$8,824	\$1,961

Tuition Assistance

The following procedure has been put in place for families seeking tuition assistance. It begins with the use of FACTS*, an independent third party to assess financial need. Need is determined based on a variety of factors. FACTS is designed to provide equal access to a Catholic education for all active members of a Catholic parish. There is a modest application fee which is paid by each applicant family. All applications are due by March 15th preceding the first day of school. FACTS provides an evaluation and summary to determine financial assistance; no financial or applicant data is returned to the school other than name and address. This ensures privacy and equal access. Applications will be reviewed by the pastor and principal. Families will be notified of any tuition reduction before the start of the school year. If a family's ability to meet their tuition obligation changes during the school year, a meeting with the pastor should be held as soon as possible.

We continue to work to make the gift of a St. Mary's School education a possibility for every child.

*FACTS forms are available on-line at online.factsmtg.com/aid and are the same forms used by Peoria Notre Dame High School.



We welcome children who turn 3 or 4 on or before Sept. 1 to our program. Some children who turn 5 very close to Sept. 1 also choose to spend another year in this enriching program. All students must be toilet-trained.

We are pleased to offer a variety of options for our littlest friends. Whether it is our most popular five full day program or three day, children are welcomed to a caring, joy-filled world of discovery. While very much a part of the whole school, this program is self-supporting so it is not fully subsidized by the parish. We are pleased to extend a \$500 discount to St. Mary's Parish families enrolling in the five full day program who have other children attending St. Mary's in grades K – 8.

2017-2018 Pre-Kindergarten

Parish Member*	Annual Tuition	Paid over 9 Months
5 Days	\$3,819	\$424 per month
3 Days	\$2,971	\$330 per month

Non-Parishioner*	Annual Tuition	Paid over 9 Months
5 Days	\$4,562	\$507 per month
3 Days	\$3,713	\$413 per month

Non-Catholic*	Annual Tuition	Paid over 9 Months
5 Days	\$5,198	\$578 per month
3 Days	\$4,350	\$483 per month

*See qualifiers on Page 1

Our pre-kindergarten program begins at 8 a.m. and ends at 3:15 p.m. Before and After Care are available for an additional fee. The cost for morning only participation is 2/3 of the full day rate. Hours for mornings only are 8 a.m. until 11:15 a.m.

Before and After Care

St. Mary's Parish school offers Before and After Care for students in all grades. Before care is available from 6:45 – 7:30 a.m. After Care is available from 3:20 – 5:45 p.m. The care program is offered on days when school is in session. Parents can choose from the Weekly Care Plan or the Daily drop-in Plan. See Fee and Payment Options sheet. Statements will be sent out at the end of each month. Payments may be made in the Before & After Care envelope.